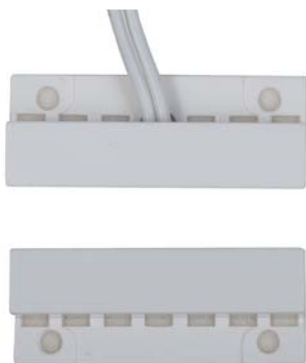


FM-106

SURFACE MOUNT CONTACTS

1.32"Lx.51"Wx.3"H Center Lead Surface Mount Type



Contact Size: 1.32"Lx.51"Wx.3"H

(33.6mmx13mmx7.5mm)

Standard Magnet Size: 1.32"Lx.51"Wx.3"H

(33.6mmx13mmx7.5mm)

Standard Gap: .83"(21mm)

Colors: White, Brown, Gray, Tan

12"(305mm) 22 AWG Leads Standard

Longer leads available.

Specifications

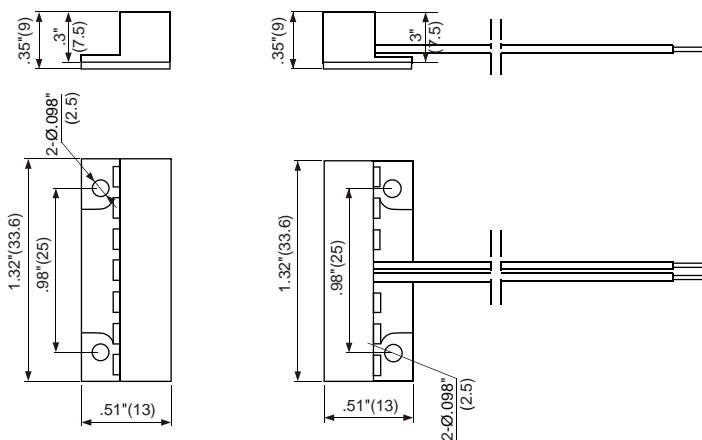
Part Number	Gap Inch(mm)	Loop Open/Closed	Reed Form	Max. Contact Rating (W)	Max. Initial Contact Resistance (mΩ)	Max. Switching Voltage (V)	Max. Switching Current (A)
FM-106	.83"(21)	CLOSED	Normally Open	10	100	AC110/DC100	0.5
FM-107B	.67"(17)	OPEN	Normally Closed	3	100	AC30/DC30	0.2

OPERATING TEMPERATURE:-40°C to +60°C

Outline Dimensions

Unit: inch(mm)

FM-106/FM-107B



The Best Guarantee Since 1984 : \$50-1

TANE ALARM PRODUCTS

906 JERICHO TURNPIKE, NEW HYDE PARK, NY 11040

Tel: 800-852-5050 • 516-328-3351 • Fax: 516-326-9125

www.tanealarm.com • E-MAIL: info@tanealarm.com